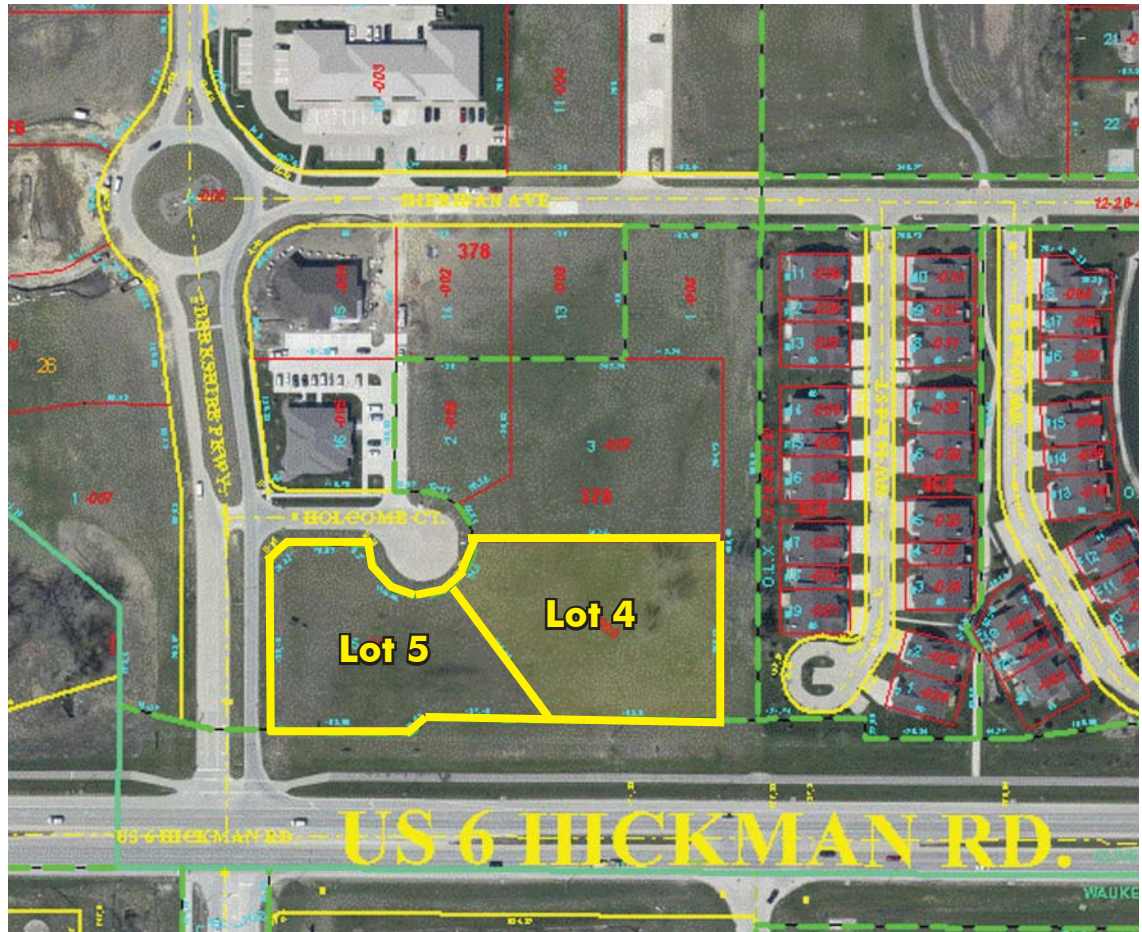


FOR
SALE

16350 & 16390 HOLCOMB 2 PARCELS

CLIVE, IOWA

2.25 acres of prime office/
retail ground



FOR MORE
INFORMATION
PLEASE CONTACT

Jon Ledinsky
Senior Associate
T 515.221.6685
jon.ledinsky@cbre.com

CB Richard Ellis/Hubbell
Commercial
6900 Westown Parkway
West Des Moines, Iowa
50266

www.cbrehc.com

LISTING # 1064129

SALE PRICE: \$8.25/psf

FEATURES:

- 2.25 total acres of prime office/retail ground in Berkshire Office Complex
- 518 feet of frontage on Highway 6 (Hickman Road)
- Across from Stivers Ford
- Zoned PUD
- Adjoining city parks and bike/walking path

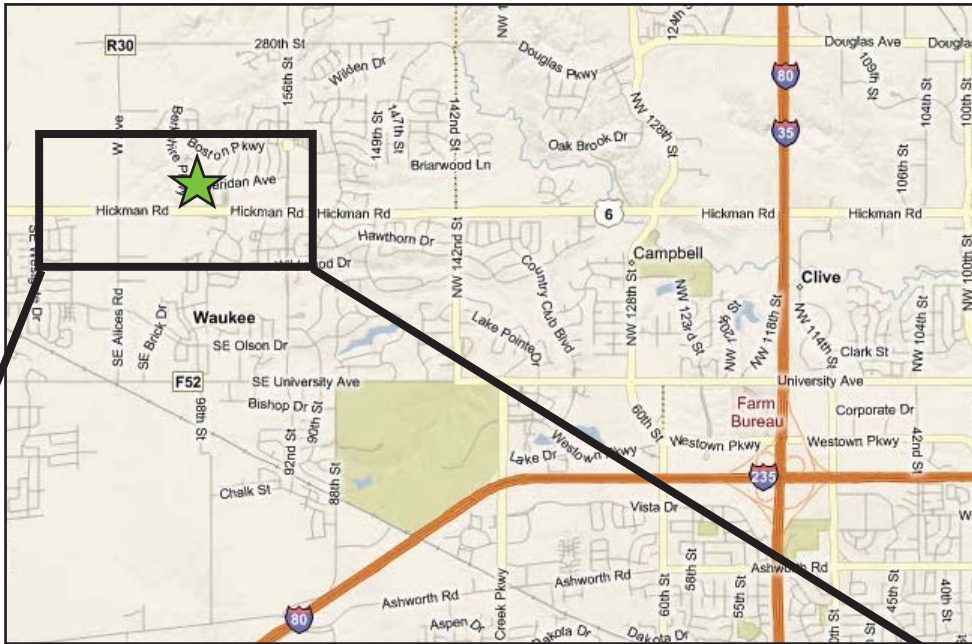
PREMISES:

- Lot 4 - 1.20 acres
- Lot 5 - 1.05 acres

FOR
SALE

16350 & 16390 HOLCOMB 2 PARCELS

CLIVE, IOWA



© 2010 CB Richard Ellis, Inc. The information above has been obtained from sources believed reliable. While we do not doubt its accuracy, we have not verified it and make no guarantee, warranty or representation about it. It is your responsibility to independently confirm its accuracy and completeness. The value of this transaction to you depends on tax and other factors which should be evaluated by your tax, financial and legal advisors. You and your advisors should conduct a careful, independent investigation of the property to determine to your satisfaction the suitability of the property for your needs.